

RELIABLE ACCURACY



| Type | JesBelt A | JesBelt S |
|--|---|---|
| Typical applications | A wide range of coarse, granular and dust like bulk materials. | A wide range of coarse, granular and dust like bulk materials. |
| Benefits | High accuracy and linearity. High operational reliability. Long lifetime. Wide range of applications. Complies with current and future EU directives. | High accuracy and linearity. High operational reliability. Long lifetime. Wide range of applications. Minimum length |
| Approvals | Class 0.5, 1 and 2 according to OIML R50, Welmec and MID | |
| Accuracy from* | ±0.25% | ±0.5% |
| Capacity range | 0.2 - 1000 m3/h | 0.2 - 1000 m3/h |
| Product temperature | -30°...110°/150° | -30°...110°/150° |
| Atex option | Zone 21+22 - Zone 1+2 | Zone 21+22 - Zone 1+2 |
| Belt width | 500-1600 mm | 500-1600 mm |
| Regulation range Feeding/weighing Belt speed | 10:1 30:1 | 10:1 30:1 |
| Construction | St. 37 or AISI 304 Open or with cabinet | St. 37 or AISI 304 Open or with cabinet |
| Options | Dust cover with inlet funnel and scraper in- and outside the belt. Dust collecting tray. Dust collecting tray with emptying conveyor. | Dust cover with inlet funnel and scraper in- and outside the belt. Dust collecting tray. Dust collecting tray with emptying conveyor. |

* Accuracy is depending on product characteristics and final design.



JesBelt A – Versatile with optimum accuracy and reliability

The reliable and accurate weigh feeder JesBelt A is the result of many years of experience. Based on several hundreds of supplied weigh feeders, the JesBelt A represents the optimum technical solution within weigh feeders.

Through careful design and a thorough selection of parts the JesBelt A provides excellent reliability and optimum lifetime.

With the unrivalled flexible design the JesBelt A is suitable for a wide range of process industries where high accuracy and linearity form the basis of an efficient production line.

The Jesbelt A weigh feeder is built around an isolated weigh bridge with 4 pcs load cells and an automatic belt tension.

This technical design creates excellent stability, accuracy and linearity in the operation of the weigh feeder - Benefits which are supported by the possibility to approve the JesBelt A according to the EU directives OIML R50, Welmec and MID for purchase and sales.

The Jesbelt A is equipped with a high signal rate incremental encoder (Tacho). The Tacho is mounted to the idle drum of the conveyor, thus continuously monitoring the speed of the belt and alarming the operator by the slightest irregularity in the operation of the weigh feeder.

The conveyor belt is fitted with plough shaped scraper on the inside of the belt. The scraper ensures that any adhesive material is removed from the belt thus not influencing the weighing accuracy.

The JesBelt A is available in a range of standard sizes manufactured from coated steel, stainless steel AISI 304, or in a combination with product wetted parts in stainless steel.

Beside the wide standard range, the JesBelt A is also available as project designed equipment for any requirement.

A wide range of accessories are available for an individual design of the weigh feeder:

- Flexible rim to eliminate product spill
- Dust cover including outside scraper of the belt, flanged inlet and outlet and dust extraction connection
- Dust tray for manual emptying
- Dust tray with emptying conveyor
- Scrapers for adhesive and sticky products
- Inlet funnel with damper for regulation of product flow
- Outlet funnel
- Belt tracking switches
- Automatic belt alignment JesTrack
- Emergency stop with wire
- ATEX compliant components for zone 21+22 and 1+2

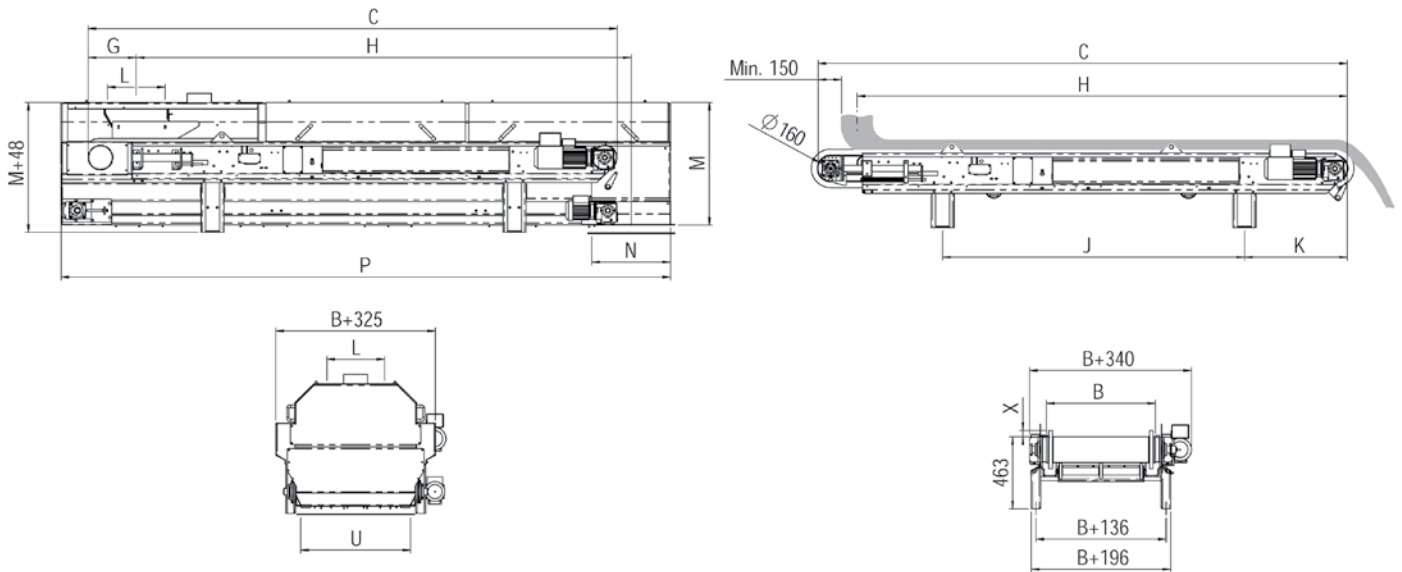
General conditions of the JesBelt A:

- Accuracy from 0.25% (Subject to final design and product characteristics)
- Max. Capacity: 1000 m³/h
- Ambient temperature for approved versions: -10°C...+40°C



RELIABLE ACCURACY

Standard range JesBelt A



| JesBelt A 500 [up to 60 m³/h] | | | | | | | | | | | | | |
|--|------|------|-----|-----------|-----|-----|-----------|---------|---------|------|--------|-------------|---------------|
| C | B | J | K | H* | G | L | U* | M* | N* | P | X** | Weight open | Weight closed |
| 2200 | 500 | 1140 | 450 | 2030/2050 | 160 | 200 | 466/506 | 610/790 | 466/506 | 2715 | 20-100 | 280 kg | 650 kg |
| 2800 | 500 | 1540 | 550 | 2630/2650 | 160 | 200 | 466/506 | 610/790 | 466/506 | 3315 | 20-100 | 295 kg | 700 kg |
| 3400 | 500 | 1940 | 650 | 3230/3250 | 160 | 200 | 466/506 | 610/790 | 466/506 | 3915 | 20-100 | 310 kg | 750 kg |
| 4200 | 500 | 2740 | 650 | 4030/4050 | 160 | 200 | 466/506 | 610/790 | 466/506 | 4715 | 20-100 | 330 kg | 820 kg |
| JesBelt A 700 [up to 120 m³/h] | | | | | | | | | | | | | |
| 2800 | 700 | 1540 | 550 | 2580/2600 | 210 | 300 | 666/706 | 610/790 | 466/506 | 3315 | 20-100 | 325 kg | 870 kg |
| 3400 | 700 | 1940 | 650 | 3180/3200 | 210 | 300 | 666/706 | 610/790 | 466/506 | 3915 | 20-100 | 340 kg | 920 kg |
| 4200 | 700 | 2740 | 650 | 3980/4000 | 210 | 300 | 666/706 | 610/790 | 466/506 | 4715 | 20-100 | 360 kg | 990 kg |
| JesBelt A 900 [up to 250 m³/h] | | | | | | | | | | | | | |
| 2800 | 900 | 1540 | 600 | 2530/2550 | 310 | 500 | 866/906 | 700/880 | 566/606 | 3415 | 20-100 | 355 kg | 1040 kg |
| 3400 | 900 | 1940 | 700 | 3130/3150 | 310 | 500 | 866/906 | 700/880 | 566/606 | 4015 | 20-100 | 370 kg | 1090 kg |
| 4200 | 900 | 2740 | 700 | 3930/3950 | 310 | 500 | 866/906 | 700/880 | 566/606 | 4815 | 20-100 | 390 kg | 1160 kg |
| JesBelt A 1100 [up to 400 m³/h] | | | | | | | | | | | | | |
| 3400 | 1100 | 1940 | 700 | 3030/3050 | 410 | 700 | 1066/1106 | 700/880 | 566/606 | 4015 | 20-100 | 400 kg | 1260 kg |
| 4200 | 1100 | 2740 | 700 | 3830/3850 | 410 | 700 | 1066/1106 | 770/880 | 566/606 | 4815 | 20-100 | 420 kg | 1330 kg |

X = flexible rim or guide rails

* Standard length or with manual dust tray / length with emptying conveyor

** Depending on belt type