



WEIGH FEEDER - JESBELT D

The JesBelt D weigh feeder consist of a weighing belt suspended in two carrying frames. The belt runs on turned end rollers and stainless belt running plates at inlet and discharge. The weigh feeder is equipped with height-adjustable weigh bridge between side members and running plates. The load over the entire width of the belt is metered by a single-point load cell, with pressure face damped inside in an oil bath. The belt is equipped with automatic belt tightener designed as a counterweight, functioning on belt return. The weigh feeder can be built into a dusttight housing with detachable side cover. The belt has adjustable nylon scraper which cleans the belt at the discharge roller, the belt is with height adjustable edge guide.

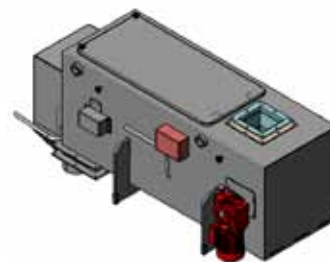
JesBelt D-380/1100

Construction : 201804 - 18024
Capacity : 600 kg/h, density 0,5 t/m³
Product : Chewing gum
Execution : Stainless steel (AISI 304)



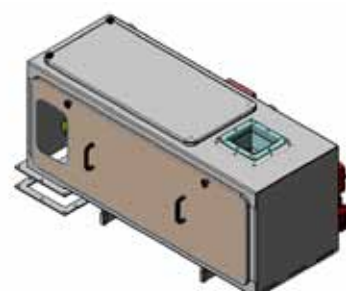
JesBelt D-380/1100

Construction : 202144 - 18186
Capacity : 2 t/h, density 0,8 t/m³
Product : Potato powder
Execution : Mild steel (St.37)



JesBelt D-380/1100

Construction : 203971 - 19451
Capacity : 4 t/h, density 0,4 t/m³
Product : Petfood
Execution : Mild steel (St.37)

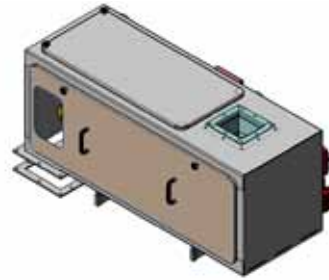




RELIABLE ACCURACY

JesBelt D-380/1100

Construction : 207474 - 24669
Capacity : 4 t/h, density 0,4 t/m³
Product : Petfood
Execution : Mild steel (St.37)



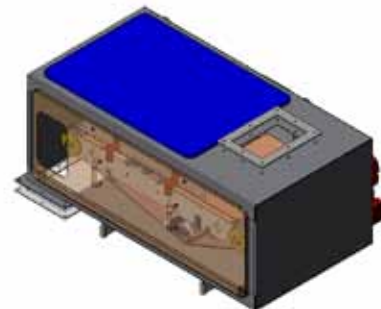
JesBelt D-610/975

Construction : 200670 - 16654
Capacity : 10 t/h, density 0,6 t/m³
Product : Potato starch
Execution : Stainless steel (AISI 304)



JesBelt D-610/1100

Construction : 201329 - 17794
Capacity : 30 t/h, density 0,65 t/m³
Product : Wood pellets
Execution : Mild steel (St.37)



JesBelt D-610/1100

Construction : 202080 - 18062
Capacity : 10 t/h, density 0,6 t/m³
Product : Potato starch
Execution : Stainless steel (AISI 304)

