

# Weighing electronics

Programmed for your application



Advanced weighing and dosing systems for static, dynamic, and continuous weighing.

**Jesma**<sup>®</sup>  
weighing solutions



# Weight control units

Jesma has a large selection of weigh control units for every need. Both in standard- and customer specific solutions. We offer control units and special software adapted to functionality of the specific production setting.

## System A2

A2 - For belt-, batch-, and flow weighing

Our A2 controller is used for various types of non-approved weighing. This versatile controller is designed for totalising and indication of flowrate for belt conveyors, batch- and flow scales.



## IT E-series

Weighing terminals from Systec are flexible and stable, while giving a great overview of the processes. They are fully programmable, and almost any weighing task can be controlled - static weighing, batch weighing, recipe handling, dosing- and check weighing.

A Systec indicator from Jesma has the following advantages:

- New software can be downloaded at all times.
- Approvable according to OIML standards.
- Large colour graphic display – this makes the indicator very user-friendly.
- Different data communications are available depending on the customers need.
- Up to 64 I/O.

Among the IT E-Series solutions from Jesma are:

IT8000E BULK - For universal bulk and batch weighing

Our BULK version is normally used in connection with our JesIntake-Series. The controllers captures the weight of incoming material and fills outgoing shipments to a pre-set target weight. The IT8000E BULK can be approved according to OIML R76-1 and R107 as well as as MID regulations.



IT2000M FW - Flow weighing software

For high precision weighing and filling, Jesma's IT2000M FW includes software for non-approved flow weighing. Can easily be used in industrial environments where high demands are placed on strength and ease of cleaning on strength.

IT3 BW - Belt weighing software

The BW-software version is used for our weigh feeders and belt scales for process weighing (approved and non-approved). The IT3 is delivered as either Desk/Wall/ Panel-mount version and has options for different interface.



# Weight control units

## Special HMI controller

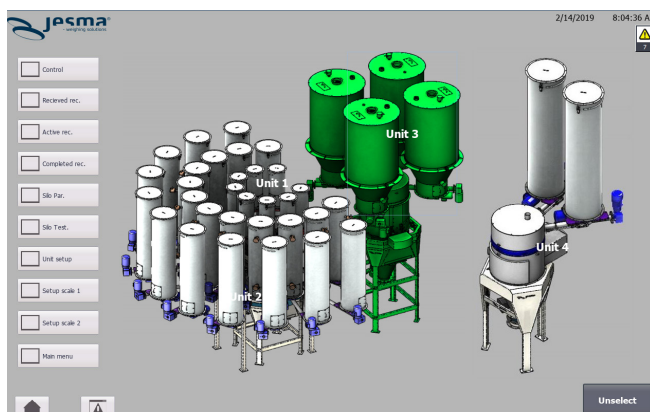
Jesma's special HMI controller can be used for controlling of several weigh feeders, for automatic control of complete micro dosing systems and much more.

The system is delivered with 12" Siemens HMI touch panel with a SIEMENS PLC system, that can connect to the customers overall control system.

### HMI controller

- Can be used for multiple systems\*
- SIEMENS touch HMI 9" for operator information, adjustment of parameters, current status and diagnostics.
- Customized HMI images for intuitive operator recognition of units.
- HMI service screen for local test and troubleshooting on the system.
- Built according to European electrical norms.
- Rittal cabinet in Mild steel IP54.

*\* Standard solution contains 1 cabinet with HMI touch that can control all systems and additional cabinet with PLC system for extra dosing systems. The additional cabinets can be placed near the extra systems in order to minimize cable lengths and make installation easier.*





**Jesma HQ**  
Helsingørvej 18  
DK-7100 Vejle  
+45 75 72 11 00  
Jesma@jesma.dk

**Jesma Poland**  
Ul. Firmowa 18  
PL-62-023 Robakowo  
(+48) 722 011 022  
(+48) 61 8 383 787  
mtr@jesma.com

**Jesma Latam**  
Zapiola 574, Chacabuco  
Buenos Aires, Argentina  
+54 9 23 64 41 88 99  
dc@jesma.com

 Part of Jesma Group

[www.jesma.com](http://www.jesma.com)